

## KMC COMMANDER GATEWAYS

Select the gateway that meets your deployment needs.

### OVERVIEW

KMC Commander is a next-generation IoT (Internet of Things) solution that connects your building and other devices to the cloud and provides meaningful data in real-time to your PC or mobile device. The KMC Commander platform consists of a gateway (either **hardware-based** or **software-based**) plus the KMC Commander IoT cloud software and services. Select the gateway that meets your deployment needs.



### ADVANTECH UNO-420 GATEWAY

Built with Intel inside, the Advantech UNO-420 hardware includes a plug-in PoE (Power over Ethernet) power supply, two Ethernet ports, DIN-rail mounting, and a rugged, fanless design.

The package includes Wi-Fi connectivity and an antenna that are used for setup (and then normally turned off). Optionally, Wi-Fi can be used during normal operation for network connection in either Client or AP mode.

#### Hardware-based gateway | [CMDR-ADVT-WIFI-BASE](#)

In addition to an **antenna** for Wi-Fi connection, the package includes the following items:

- **PoE Power Supply** | [CMDR-D3-PWR-POE](#)
- **DIN Rail Mount** | [CMDR-ADVT-DINMT](#)



**NOTE:** If desired, a third-party 10–30 VDC power supply can be used (with the supplied terminal block) instead of the included PoE (Power over Ethernet) supply.

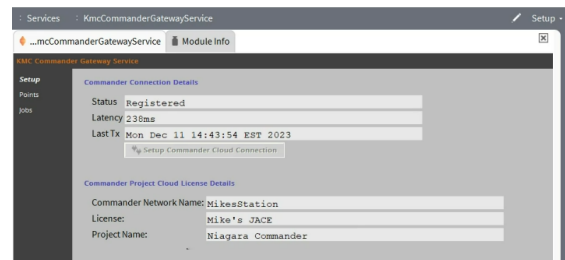
### GATEWAY SERVICE FOR NIAGARA 4

The KMC Commander Gateway Service for the Niagara Software Utility allows the KMC Commander IoT cloud software to remotely view and manage new and existing Niagara stations.

The gateway service for Niagara 4 sends data securely to the KMC Commander Cloud. Niagara users can leverage existing and new installations for remote viewing and management with the easy-to-use and flexible KMC Commander user interface.

#### Software-based gateway for KMC Workbench | [CMDR-NIAGARA](#)

#### Software-based gateway for third parties | [CMDR-NIAGARA-3P](#)



### GATEWAY FOR VM HYPERVISORS

The KMC Commander Virtual Machine (VM) allows for remote viewing and management of new and existing equipment without needing to deploy a physical gateway into the network.

The virtual machine can be deployed from a .vmx, .vmdk, .vhd, .vhdx, or .img format into a hypervisor. One hour of KMC Controls professional services is included to qualify and support setting up the virtual machine.

#### Software-based gateway for VM hypervisors | [CMDR-VM](#)

## POINT LICENSING

Select the number of points required for your project's size.

Point licensing includes one year of cloud storage as well as software and security updates, renewing annually.

A **point** is a device data point that is alarmed, scheduled, trended, or used in control logic (such as temperature, humidity, voltage, setpoints, operation mode, and open/closed switch status). Not all points in a controller will be points of interest. Points manually selected to be continuously tracked count as points of interest and are licensed as such.

Each point of interest being pulled from a device uses one license point. For example, 60 controllers gathering eight points of interest each would need a total of 480 license points. A 500 point license would cover this amount and provide room for small future additions to the project. Point licenses can be purchased in increasing increments as projects expand.

License renewal notifications will be forwarded in advance and prior to expiration of the existing license term. (See the [License Expiration Policy](#) on KMC Commander Help for details.)

100 points annual license	<a href="#">CMDR-1YR-LIC-000100</a>
250 points annual license	<a href="#">CMDR-1YR-LIC-000250</a>
500 points annual license	<a href="#">CMDR-1YR-LIC-000500</a>
750 points annual license	<a href="#">CMDR-1YR-LIC-000750</a>
1000 points annual license	<a href="#">CMDR-1YR-LIC-001000</a>
1500 points annual license	<a href="#">CMDR-1YR-LIC-001500</a>
2000 points annual license	<a href="#">CMDR-1YR-LIC-002000</a>
3000 points annual license	<a href="#">CMDR-1YR-LIC-003000</a>
4000 points annual license	<a href="#">CMDR-1YR-LIC-004000</a>
5000 points annual license	<a href="#">CMDR-1YR-LIC-005000</a>
6000 points annual license	<a href="#">CMDR-1YR-LIC-006000</a>
7000 points annual license	<a href="#">CMDR-1YR-LIC-007000</a>
8000 points annual license	<a href="#">CMDR-1YR-LIC-008000</a>
9000 points annual license	<a href="#">CMDR-1YR-LIC-009000</a>
10,000 points annual license	<a href="#">CMDR-1YR-LIC-010000</a>

## ADDITIONAL ACCESSORIES

Optionally select any accessories useful for your project.

PoE Power Supply (Replacement) [CMDR-D3-PWR-POE](#)

Wi-Fi Antenna Extension Cables:

- 3-foot cables (pack of two) [CMDR-ANT-EXT-3](#)
- 15-foot cables (pack of two) [CMDR-ANT-EXT-15](#)

MS/TP to Ethernet IP BACnet Router [BAC-5051AE](#)

KMDigital to BACnet Translator [KMD-5551E](#)



BAC-5051AE Router



KMD-5551E Translator

## ADDITIONAL INFORMATION AND FREQUENTLY ASKED QUESTIONS

See these resources to find the information you need.

Where can I see case studies of how KMC Commander has been used? See the [KMC Commander Solutions](#) page.

What videos are available? See the [KMC Commander playlist](#) on the KMC Controls channel on YouTube.

How is KMC Commander installed and configured? See [KMC Commander Help](#).

What IT information is required before installation? Log into the KMC Controls web site and see the [KMC Commander IT/Network Information Technical Bulletin](#).

How do I administer a KMC Commander project? Log into the KMC Controls web site and see the [KMC Commander \(Cloud\) System Administration Application Guide](#).