



KMC Commander Virtual Machine

DESCRIPTION

The KMC Commander Virtual Machine allows for remote viewing and management of new and existing equipment without needing to deploy a physical gateway into the existing network. It is an alternative to running KMC Commander through an Advantech UNO-420 gateway, or through the KMC Commander Gateway Service in a Niagara network.

The virtual machine sends data securely to the KMC Commander Cloud. Users can leverage existing and new installations for remote viewing and management with the easy-to-use and flexible KMC Commander user interface.

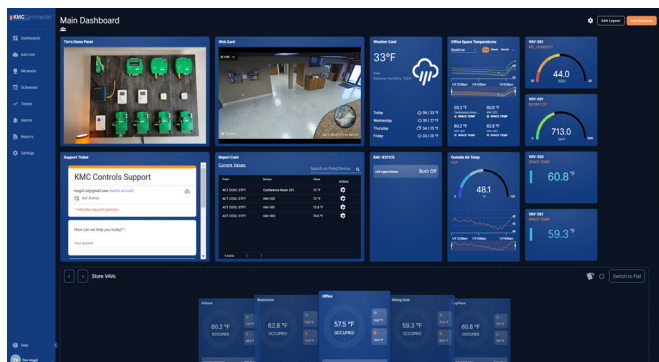
Key features include:

- Reads Boolean, Numeric, Enumerated, and String values
- Writes Boolean, Numeric, and Enumerated values
- KMC Commander schedules are created and managed in the KMC Commander cloud and transferred to the KMC Commander Gateway service to run locally.
- KMC Commander text and email alarms can be based on values from BACnet systems.



KMC COMMANDER VIEWS

Create dashboards quickly and share to users immediately, with floorplans, heat maps, trends, virtual thermostats, web content, and more!



SPECIFICATIONS/REQUIREMENTS

The virtual machine can be provided in a .vmx, .vmdk, .vhd, .vhdx, or .img format for deployment into a hypervisor. One hour of KMC Controls professional services is included to qualify and support setting up the virtual machine.

ORDERING INFORMATION

MODEL	DESCRIPTION
CMDR-VM	KMC Commander Virtual Machine, plus one hour of professional services for setup
For point licensing, see the <i>KMC Commander Selection Guide</i> .	

KMC Controls, Inc.
19476 Industrial Drive
New Paris, Indiana 46553
877.444.5622 / Fax: 574.831.5252
info@kmccontrols.com
www.kmccontrols.com

