



# KMC Commander Gateway Service

for  
niagara<sup>4</sup>

## DESCRIPTION

The KMC Commander Gateway Service for the Niagara Software Utility allows KMC Commander cloud software to remotely view and manage new and existing Niagara stations.

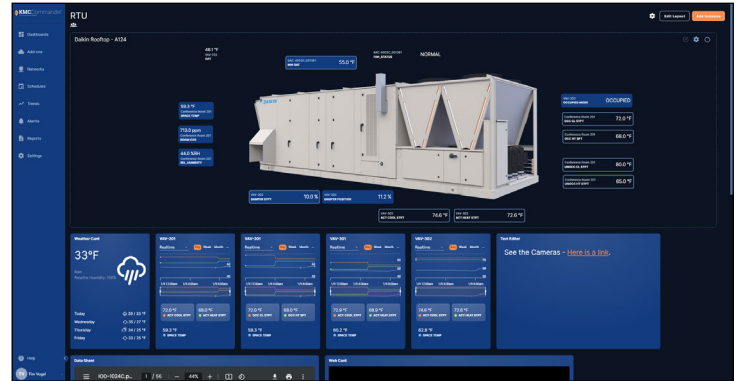
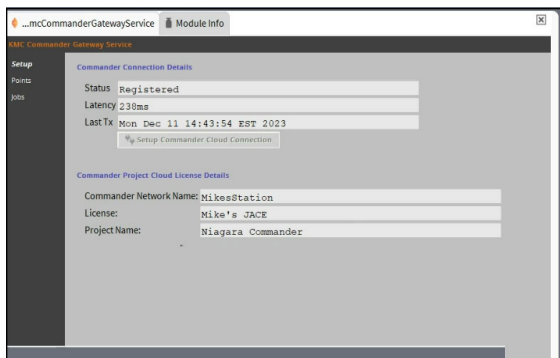
The gateway service for Niagara 4\* sends data securely to the KMC Commander cloud. Niagara users can leverage existing and new installations for remote viewing and management with the easy-to-use and flexible KMC Commander user interface.

Key features include:

- Reads Boolean, Numeric, Enumerated, and String values
- Writes Boolean, Numeric, and Enumerated values
- KMC Commander schedules are created and managed in the KMC Commander cloud and transferred to the KMC Commander Gateway service to run locally.
- KMC Commander text and email alarms can be based on values from Niagara systems.
- Supports up to 2,500 points

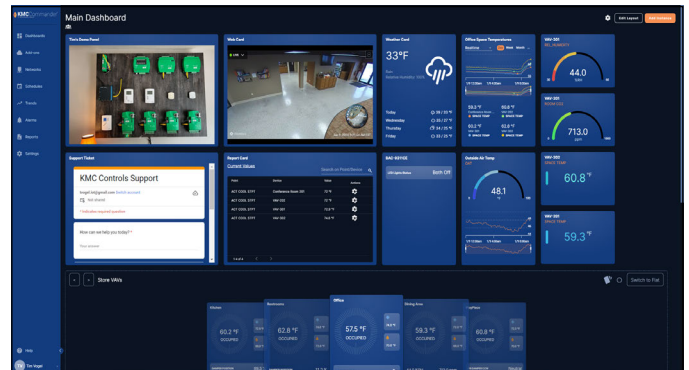
## Niagara Workbench Views

Niagara Workbench views allow users to easily configure Niagara systems to communicate with KMC Commander.



## KMC Commander Views

Create dashboards quickly and share to users immediately, with floorplans, heat maps, trends, virtual thermostats, web content, and more!



## SPECIFICATIONS/REQUIREMENTS

The service is provided in a Niagara .jar file for distribution to—and setup of—JACE-only deployments. A remote connection to a JACE is recommended for future updates.

\*Minimum Niagara 4.6 is required.

## ORDERING INFORMATION

DESCRIPTION	MODEL
Software Service: KMC Commander Gateway for KMC JACE, Niagara module license	<b>CMDR-NIAGARA</b>
Software Service: KMC Commander Gateway for third party JACE, Niagara module license	<b>CMDR-NIAGARA-3P</b>

# POINT LICENSING

## What Is a Point (of Interest) License?

A **point** is a device data point that is alarmed, scheduled, trended, or used in control logic. Examples of data points include, but are not limited to, temperature, air volume, CO<sub>2</sub> level, door status (open/closed), pressure, tank level, and binary status (on/off). When one of these points is manually selected to be continuously tracked, it counts as a point of interest and is licensed as such.

A **point of interest** is any user-selected point that is configured to be tracked and/or commanded by KMC Commander. Not all points in a controller will be points of interest. Points of interest are continuously subscribed to in the KMC Commander software.

Each point of interest being pulled from a device uses 1 license point. For example, 60 controllers gathering 8 points of interest each would need a total of 480 license points. A 500 point license would cover this amount and provide room for small future additions to the project. Point licenses can be purchased in increasing increments and are available for purchase as projects expand.

## How Does Licensing Work?

Licensing is an annual term and based on total number of system points identified as points of interest. Licensing also includes cloud storage as well as software and security updates and enhancements for the length of the term.

License renewal notifications will be forwarded in advance and prior to expiration of the existing license term.

For 14 days after a license's expiration date, KMC Commander will continue to function to allow time to remedy payment. After 14 days, KMC Commander will not be accessible, and will not receive updates and enhancements, store data in the cloud, or interact with the building automation system. If the license is renewed prior to 60 days after the initial license expiration date, KMC Commander will return to normal operation. If not renewed for more than 60 days, the license will be decommissioned, at which point a new license would need to be purchased and the project set up again from the beginning.

POINT LICENSES		
Add licenses for expected points:		
Points	Part Number	Description
100	<a href="#">CMDR-1YR-LIC-000100</a>	Up to 100 points annual license
250	<a href="#">CMDR-1YR-LIC-000250</a>	Up to 250 points annual license
500	<a href="#">CMDR-1YR-LIC-000500</a>	Up to 500 points annual license
750	<a href="#">CMDR-1YR-LIC-000750</a>	Up to 750 points annual license
1000	<a href="#">CMDR-1YR-LIC-001000</a>	Up to 1000 points annual license
1500	<a href="#">CMDR-1YR-LIC-001500</a>	Up to 1500 points annual license
2000	<a href="#">CMDR-1YR-LIC-002000</a>	Up to 2000 points annual license
3000	<a href="#">CMDR-1YR-LIC-003000</a>	Up to 3000 points annual license
4000	<a href="#">CMDR-1YR-LIC-004000</a>	Up to 4000 points annual license
5000	<a href="#">CMDR-1YR-LIC-005000</a>	Up to 5000 points annual license
6000	<a href="#">CMDR-1YR-LIC-006000</a>	Up to 6000 points annual license
7000	<a href="#">CMDR-1YR-LIC-007000</a>	Up to 7000 points annual license
8000	<a href="#">CMDR-1YR-LIC-008000</a>	Up to 8000 points annual license
9000	<a href="#">CMDR-1YR-LIC-009000</a>	Up to 9000 points annual license
10,000	<a href="#">CMDR-1YR-LIC-010000</a>	Up to 10,000 points annual license