



# KMC Commander Gateway Service

for

## niagara<sup>4</sup>

## DESCRIPTION

The KMC Commander Gateway Service for the Niagara Software Utility allows the KMC Commander Platform to remotely view and manage new and existing Niagara stations.

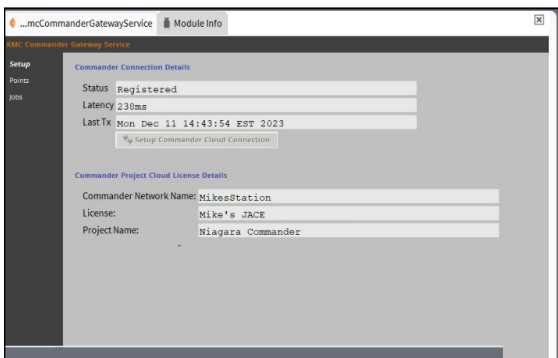
The gateway service for Niagara 4\* sends data securely to the KMC Commander Cloud. Niagara users can leverage existing and new installations for remote viewing and management with the easy-to-use and flexible KMC Commander user interface.

Key features include:

- Reads Boolean, Numeric, Enumerated, and String values
- Writes Boolean, Numeric, and Enumerated values
- KMC Commander schedules are created and managed in the KMC Commander cloud and transferred to the KMC Commander Gateway service to run locally.
- KMC Commander text and email alarms can be based on values from Niagara systems.
- Supports up to 2,500 points

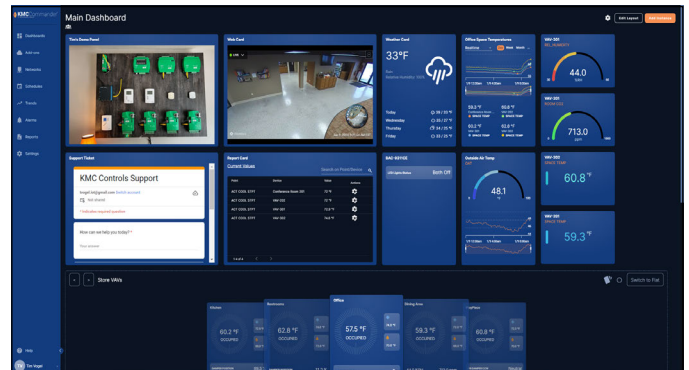
## Niagara Workbench Views

Niagara Workbench views allow users to easily configure Niagara systems to communicate with KMC Commander.



## KMC Commander Views

Create dashboards quickly and share to users immediately, with floorplans, heat maps, trends, virtual thermostats, web content, and more!



## SPECIFICATIONS/REQUIREMENTS

The service is provided in a Niagara .jar file for distribution to—and setup of—JACE-only deployments. A remote connection to a JACE is recommended for future updates.

\*Minimum Niagara 4.6 is required.

## ORDERING INFORMATION

DESCRIPTION	MODEL
Software Service: KMC Commander Gateway for KMC JACE, Niagara module license	CMDR-NIAGARA
Software Service: KMC Commander Gateway for third party JACE, Niagara module license	CMDR-NIAGARA-3P